

The VeggieGraphics logo, which includes a green sunflower with a yellow center and a green stem with two leaves.

VeggieGraphics

Graphic Design for Animal Rights Activists



שיעור 9: מסכות שכבה (Layer Masks)



מסכות שכבה:
מאפשרות להסתיר חלקים מהשכבה בצורה לא
הרסנית.

מקנה שליטה בערוץ האלפא מבלי לבצע שינויים
בלתי הפיכים בשכבה.

פועלות כשכבות עצמאית בשחור-לבן (אזורים
שחורים שקופים, אזורים לבנים אטומים).



Layers, Channels, Paths, Undo - Brushes, Patt...

Lighting27 .jpg-2 Auto

Layers

Mode: Normal

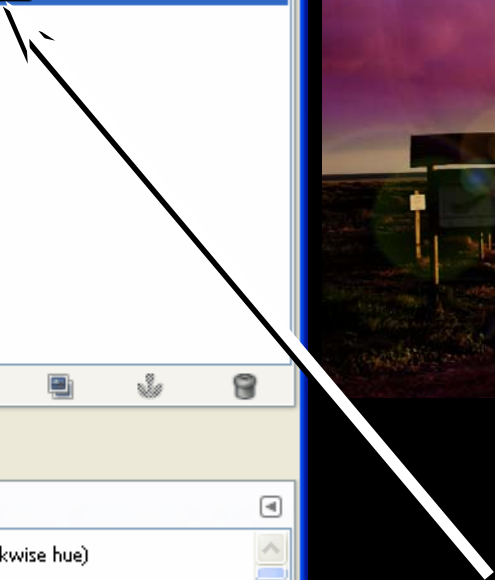
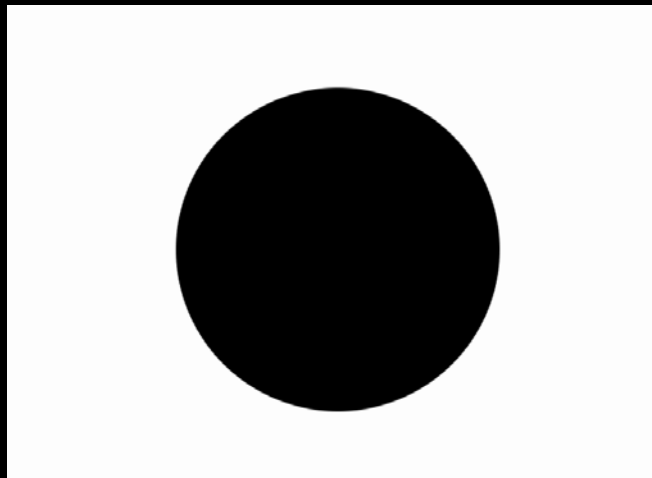
Opacity: 100.0

Lock:

Background

Gradients

- FG to BG (HSV clockwise hue)
- FG to BG (HSV counter-clockwise)
- FG to BG (RGB)
- FG to Transparent
- Untitled
- חסר-שם




מסכה



Layers, Channels, Paths, Undo - Brushes, Patt...

Lighting27 .jpg-2 Auto

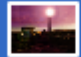


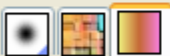
Layers

Mode: Normal

Opacity: 100.0

Lock:

 Background



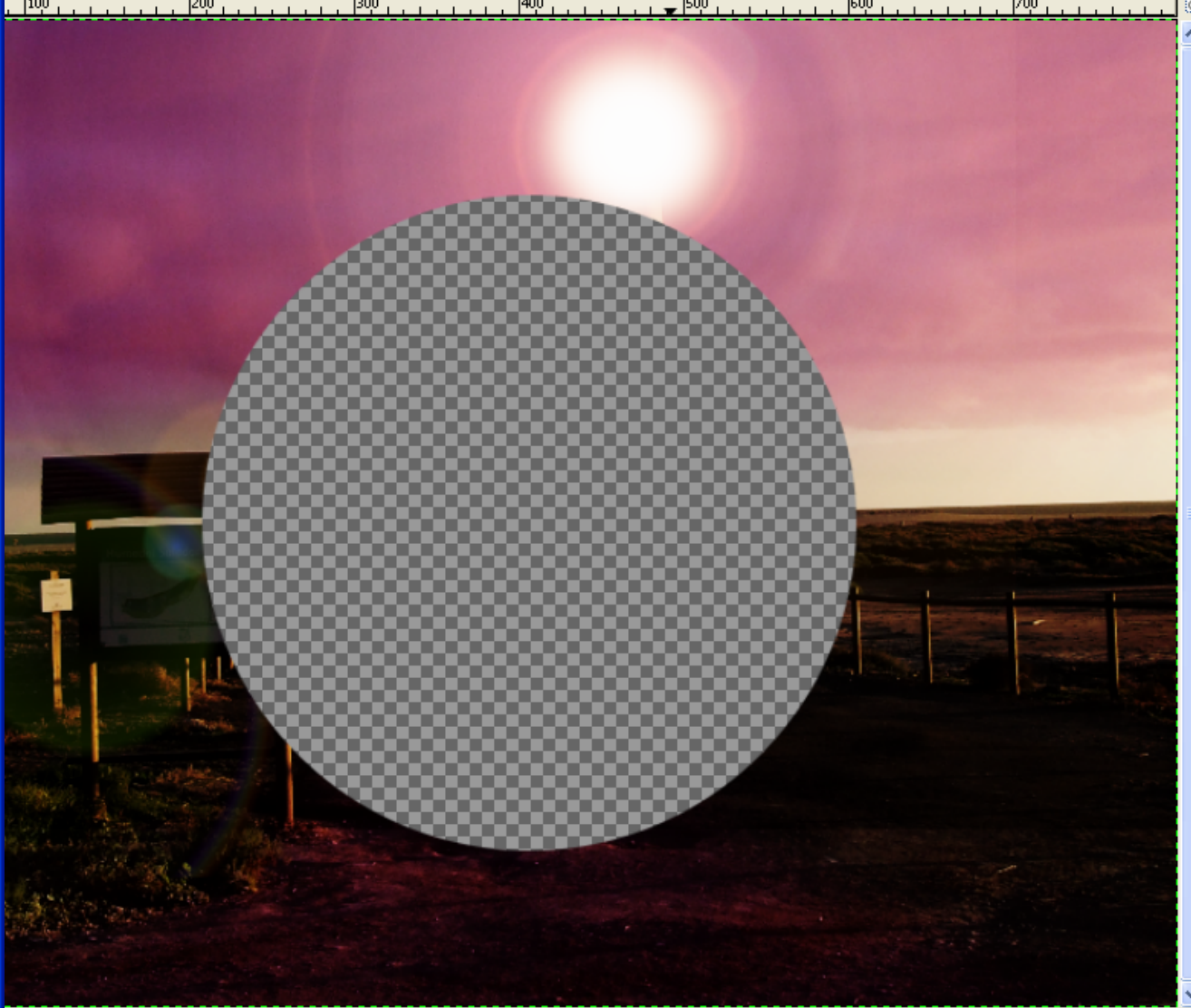
Gradients

- FG to BG (HSV clockwise hue)
- FG to BG (HSV counter-clockwise)
- FG to BG (RGB)
- FG to Transparent
- Untitled
- אש-רשם

g-2.0 (RGB, 1 layer) 800x600 - GIMP

View Image Layer Colors Tools Filters Windows Help

100 200 300 400 500 600 700



108% Background mask (104.3 MB)



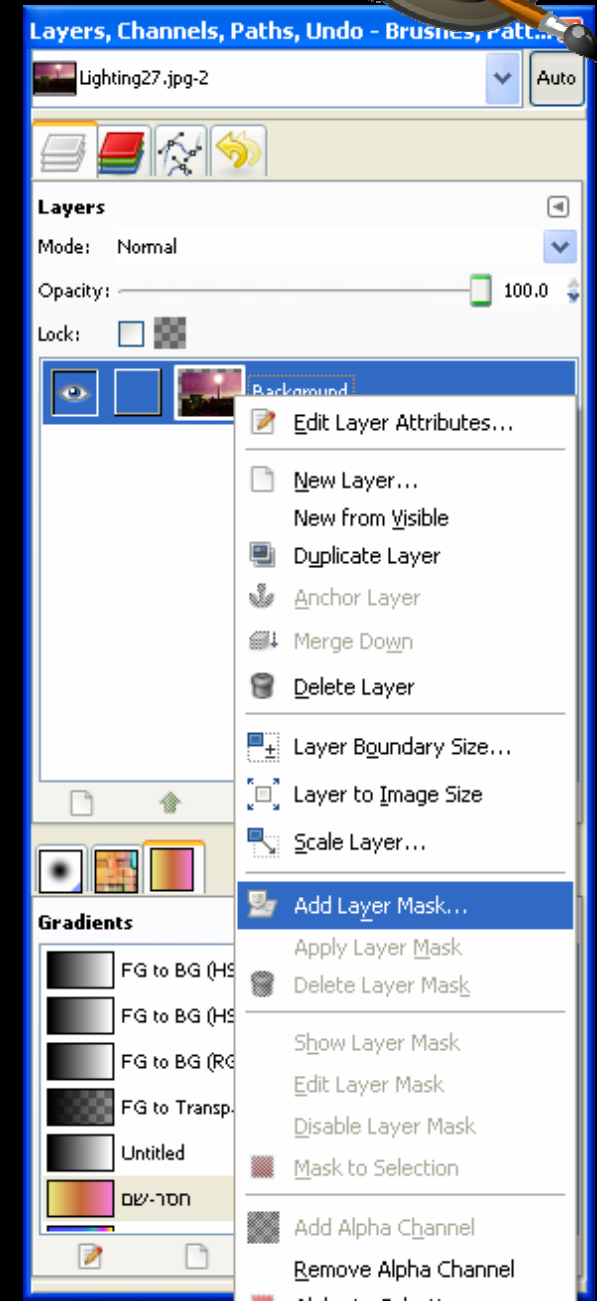
*Lighting27.jpg-2.0 (RGB, 1 layer) 800x600 - GIMP

File Edit Select View Image Layer Colors Tools Filters Windows Help

- New Layer... Shift+Ctrl+N
- New from Visible
- Duplicate Layer Shift+Ctrl+D
- Anchor Layer Ctrl+H
- Merge Down
- Delete Layer
- Stack
 - Mask
 - Add Layer Mask...
 - Apply Layer Mask
 - Delete Layer Mask
 - Transparency
 - Transform
- Layer Boundary Size...
- Layer to Image Size
- Scale Layer...
- Crop to Selection
- Autocrop Layer

px 108% Background (104.2 MB)

Layer → Mask → Add Layer Mask



R.Click on Layer →
Add Layer Mask



*Lighting27.jpg-2.0 (RGB, 1 layer) 800x600 - GIMP

File Edit Select View Image Layer Colors Tools Filters Windows Help

0 100 400 500 600 700

0 1 0 0 2 0 0 3 0 0 4 0 0 5 0 0

px 108% Add a mask that allows non-destructive editing of transparency

- New Layer... Shift+Ctrl+N
- New from Visible
- Duplicate Layer Shift+Ctrl+D
- Anchor Layer Ctrl+H
- Merge Down
- Delete Layer
- Stack
 - Mask
 - Add Layer Mask...
 - Apply Layer Mask
 - Delete Layer Mask
 - Show Layer Mask
 - Edit Layer Mask
 - Disable Layer Mask
 - Transparency
 - Transform
- Layer Boundary Size...
- Layer to Image Size
- Scale Layer...
- Crop to Selection
- Autocrop Layer

Add Layer Mask

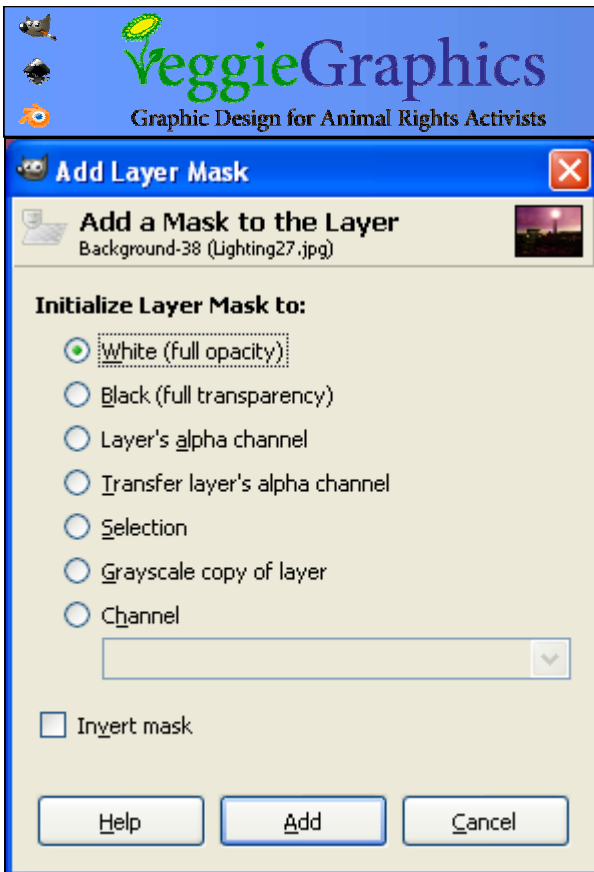
Add a Mask to the Layer
Background-38 (Lighting27.jpg)

Initialize Layer Mask to:

- White (full opacity)
- Black (full transparency)
- Layer's alpha channel
- Transfer layer's alpha channel
- Selection
- Grayscale copy of layer
- Channel

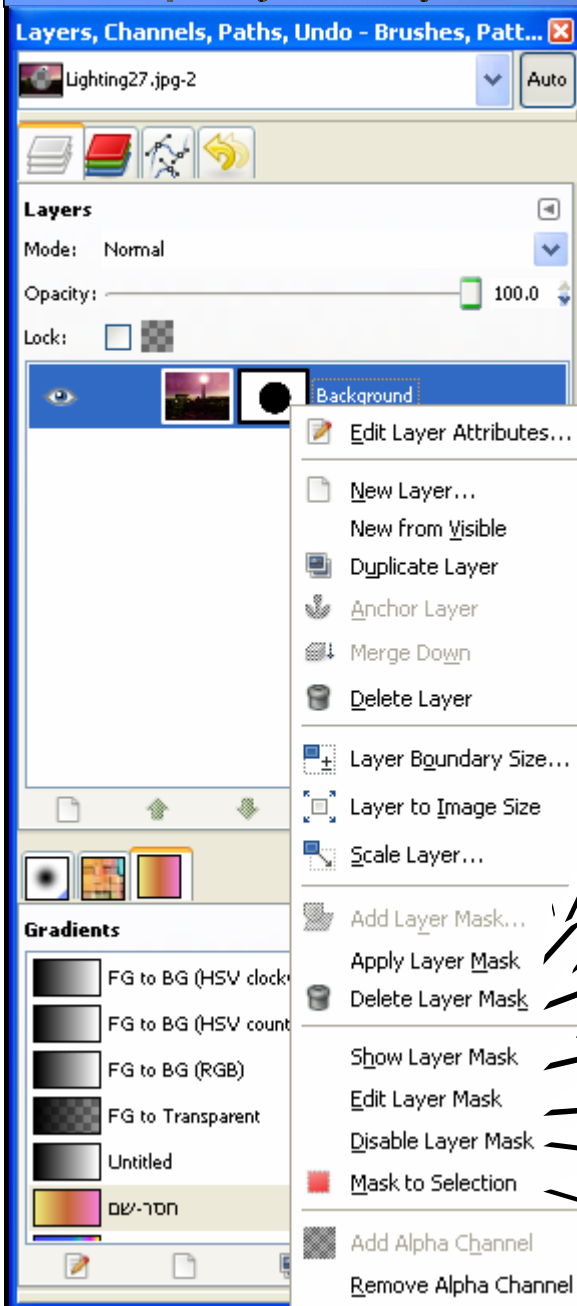
Invert mask

Help Add Cancel



- ניתן ליצור מסכות חדשות ב:
- אטימות מלאה (מסכה לבנה)
 - שקיפות מלאה (מסכה שחורה)
 - לפי ערוץ האלפא של השכבה
 - במקום ערוץ האלפא של השכבה (מאפס את הערוץ לאטימות מלאה)
 - בהתאם לבחירה
 - לפי העתק שחור-לבן של השכבה
 - ערוץ מותאם אישית

ניתן גם ליצור מסכות הפוכות (Invert mask)



קיבוע המסכה (מחיקת אזורים שחורים – מסכה לאלפא)

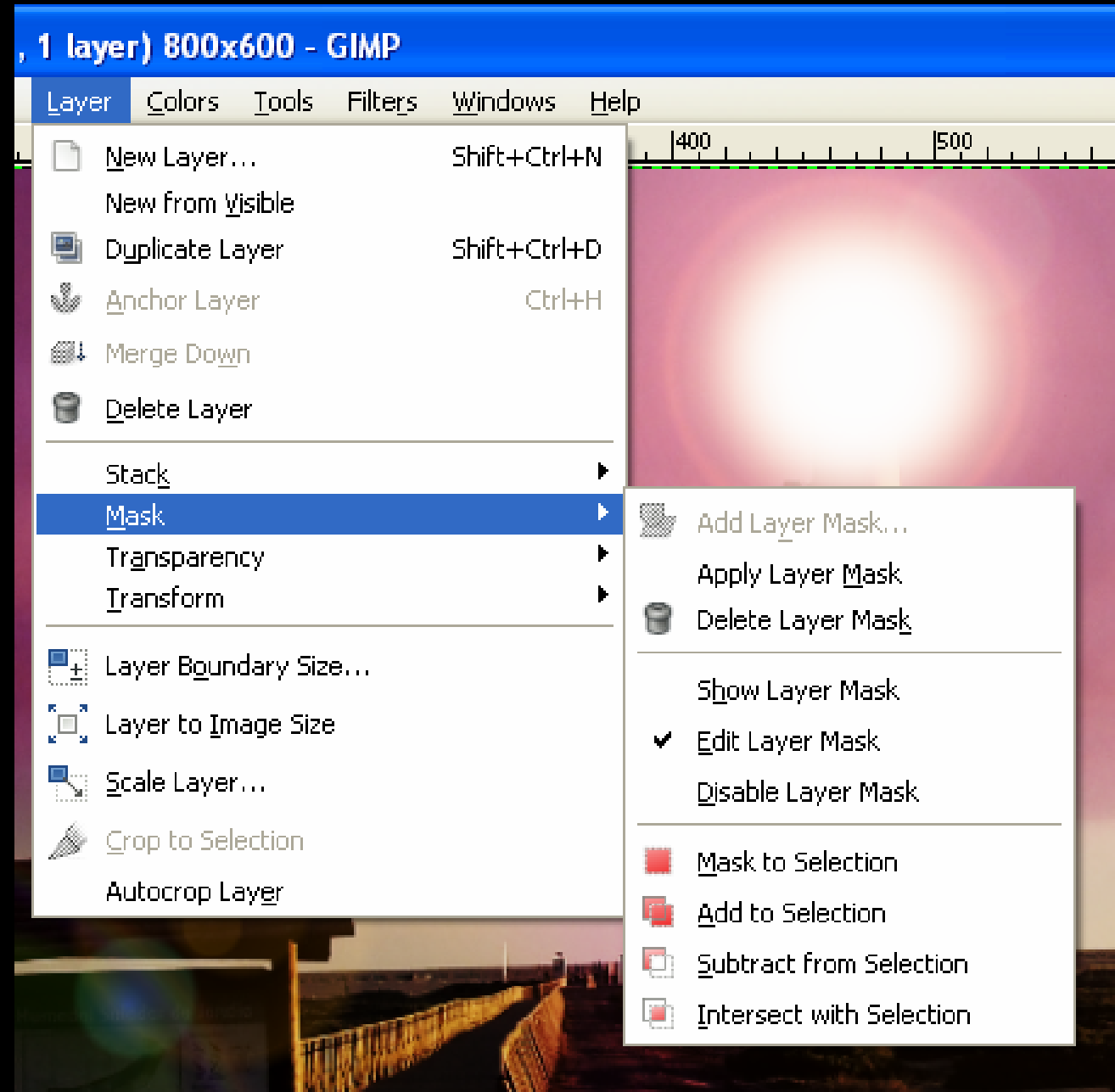
מחיקת המסכה

הצגת המסכה

עריכת מסכה

ביטול מסכה

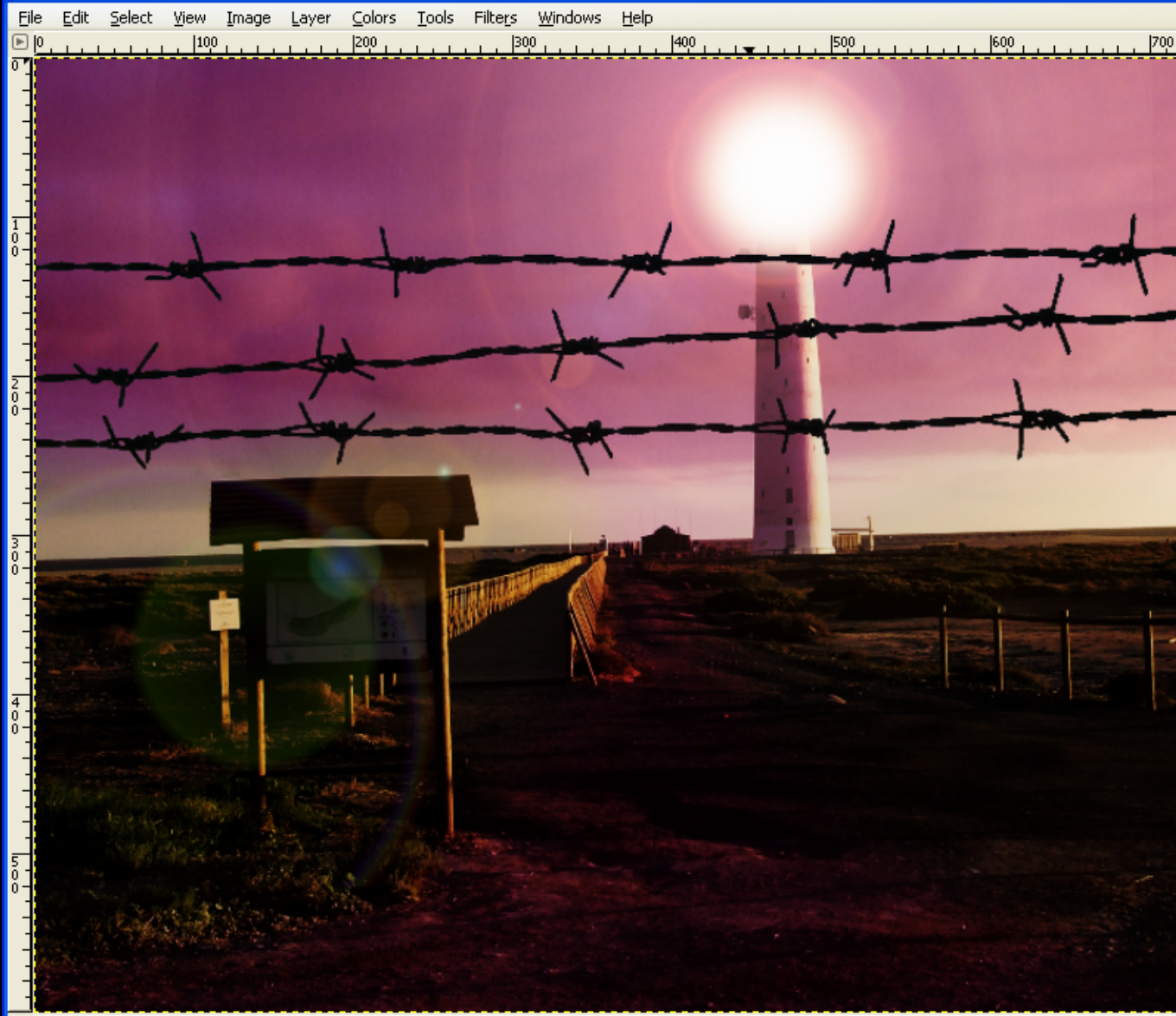
מסכה לבחירה



בתפריט
Layer →
Mask
ניתן לבצע
פעולות נוספות
על הבחירה
על בסיס
המסכה



Mask_01.xcf-2.0 (RGB, 2 layers) 800x600 - GIMP



Layers, Channels, Paths, Undo - Brushes, Patt...

Mask_01.xcf-2 Auto

Layers

Mode: Normal

Opacity: 100.0

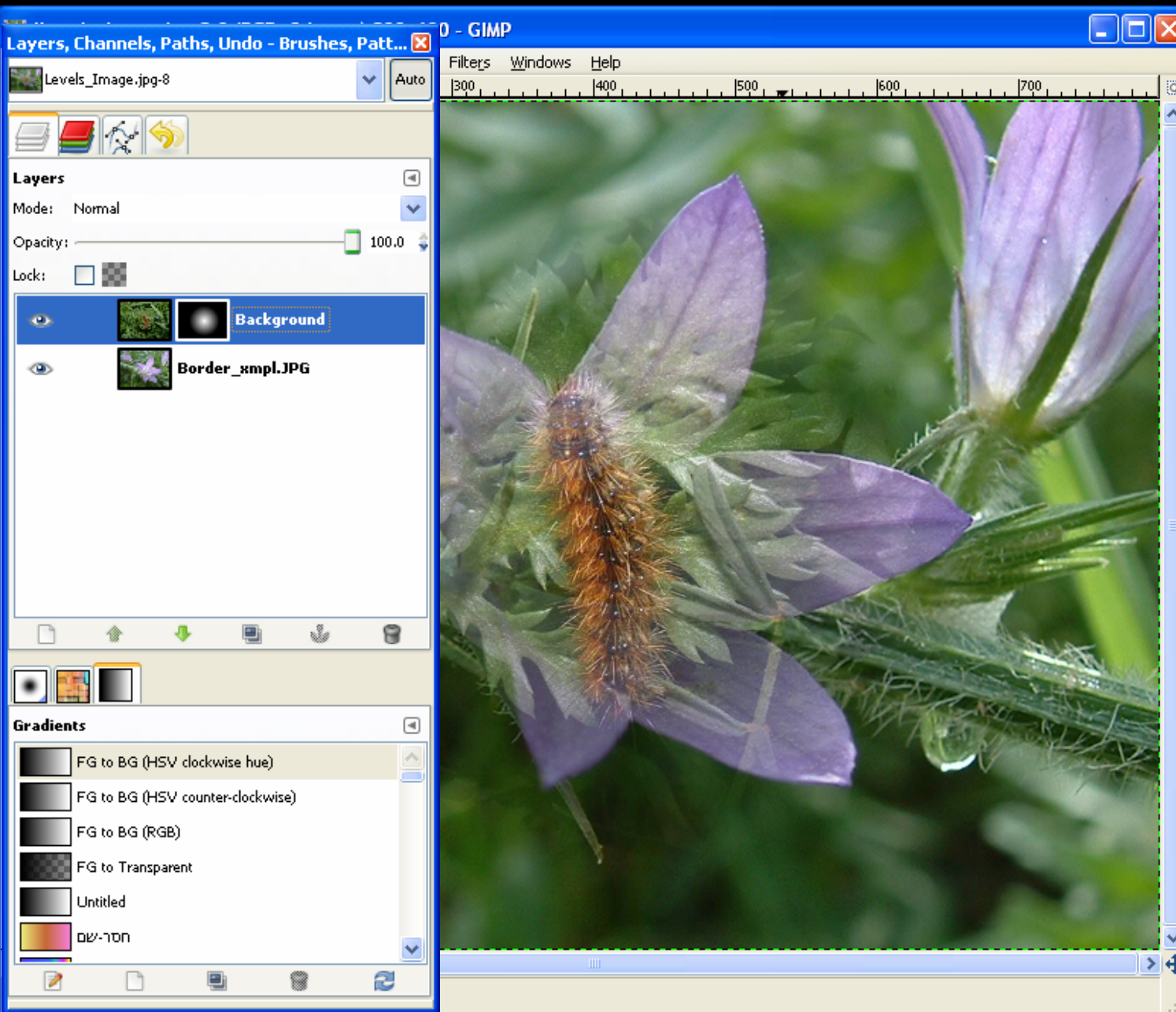
Lock:

- Pasted Layer
- Background

Gradients

- FG to BG (HSV clockwise hue)
- FG to BG (HSV counter-clockwise)
- FG to BG (RGB)
- FG to Transparent
- Untitled
- מט-רדח

px 108% Background (44.2 MB)



מסכות
מתנהגות
כשכבות
לכל דבר,
ואפשר
להפעיל
עליהן
כלים
ופילטרים



VeggieGraphics

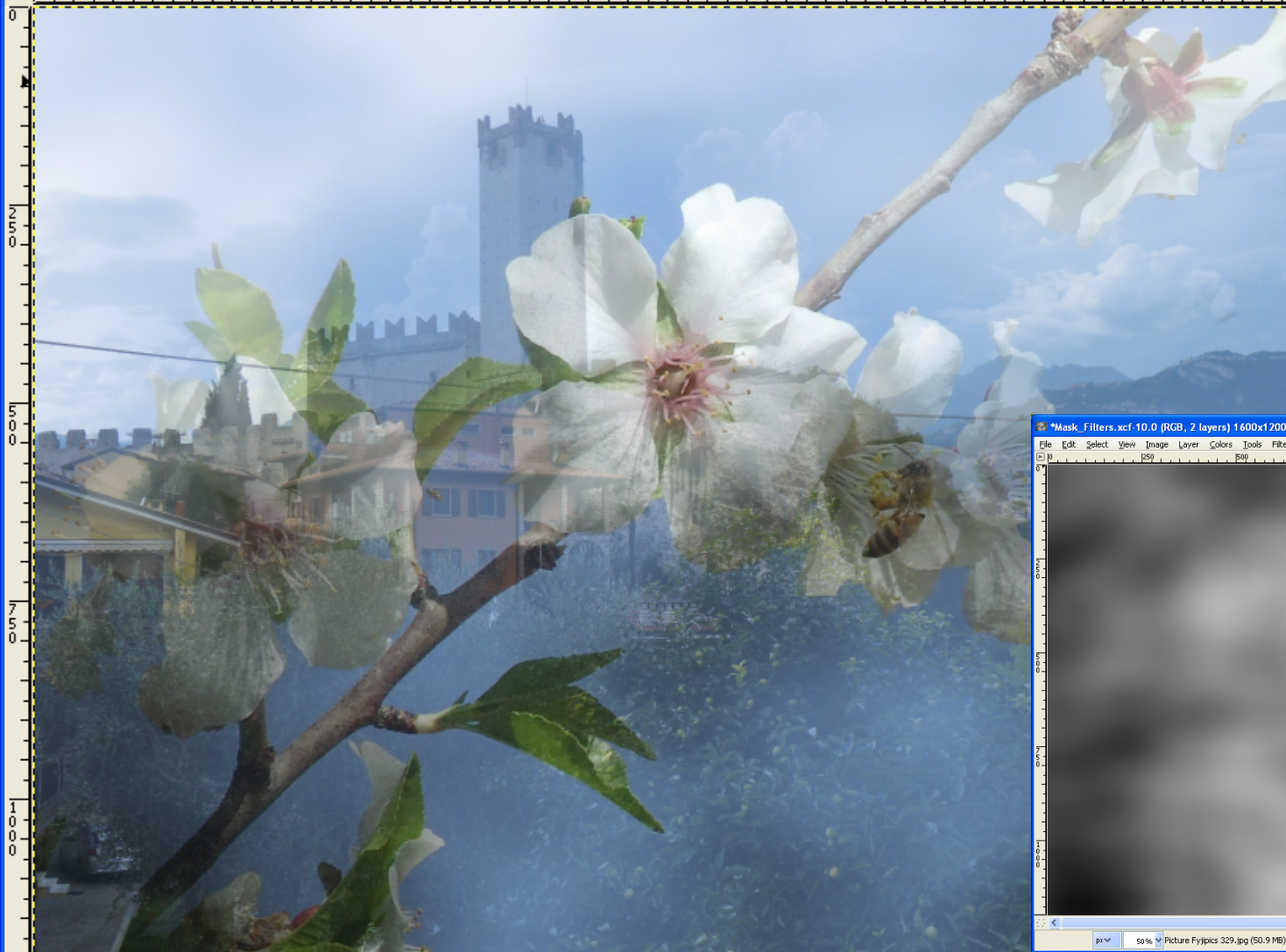
Graphic Design for Animal Rights Activists



Mask_Filters.xcf-10.0 (RGB, 2 layers) 1600x1200 - GIMP

File Edit Select View Image Layer Colors Tools Filters Windows Help

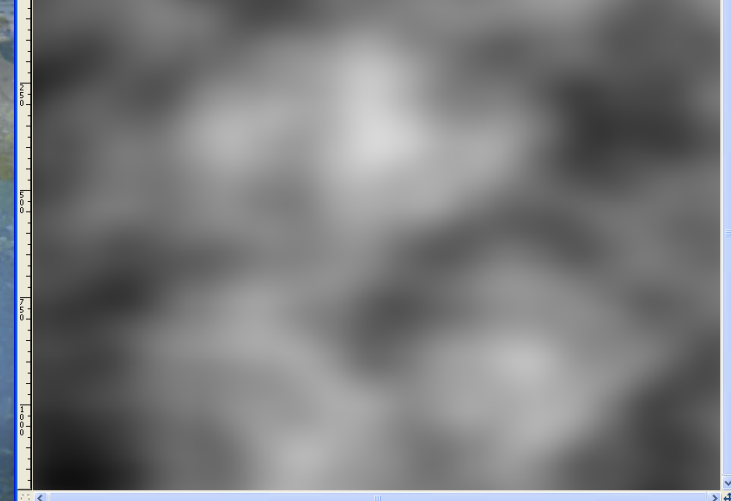
0 250 500 750 1000 1250 1500



*Mask_Filters.xcf-10.0 (RGB, 2 layers) 1600x1200 - GIMP

File Edit Select View Image Layer Colors Tools Filters Windows Help

0 250 500 750 1000 1250 1500



px 50% Picture Fv1pics 329.jpg (50.9 MB)

px 50% Copied pixels to the clipboard



*Mask_Filters.xcf-10.0 (RGB, 2 layers) 1600x1200 - GIMP

File Edit Select View Image Layer Colors Tools Filters Windows Help

0 1250 1500 750 1000 1250 1500

0 250 500 750 1000

0 500 750 1000

0 1000

מסכה

px 50% Picture Fyjipics 329.jpg (50.9 MB)

Layers, Channels, Paths, Undo - Brush

Mask_Filters.xcf-10

Channels

- Red
- Green
- Blue
- Alpha

אלפא

Gradients

- FG to BG (HSV clockwise hue)
- FG to BG (HSV counter-clockwise)
- FG to BG (RGB)
- FG to Transparent
- Untitled
- חסר-שם